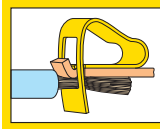
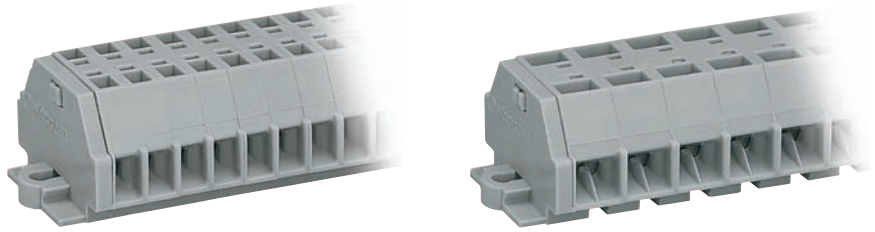



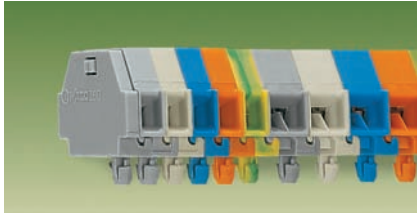
# Terminal Strips with Fixing Flanges or Snap-in Mounting Feet 1.5 mm<sup>2</sup> / AWG 16, Series 260



<b>Test plug modules</b> see page 10.28	<b>0.08 – 1.5 mm<sup>2</sup></b> 400 V/6 kV/3 ① 18 A	AWG 28 – 16 300 V, 10 A ② 300 V, 15 A ③	<b>2 x 0.08 – 1.5 mm<sup>2</sup></b> 400 V/6 kV/3 ① 18 A	2 x AWG 28 – 16 300 V, 10 A ② 300 V, 15 A ③
	Pole width 5 mm / 0.197 in 8 – 9 mm / 0.33 in		Pole width 8 mm / 0.315 in 8 – 9 mm / 0.33 in	
* ① VDE IEC/KEH CCA/KEH N S SABS GL BV LR NV ② ③		* ① VDE IEC/KEH CCA/KEH N S SABS GL BV LR NV ② ③		



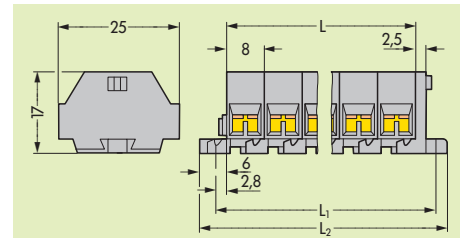
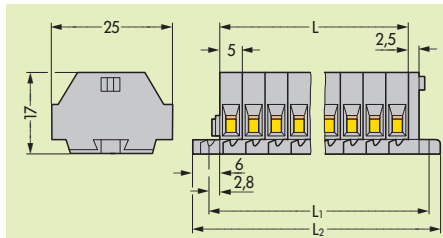
- ① 400 V = rated voltage  
6 kV = rated surge voltage  
3 = pollution degree  
(see also section 15)
- ② For longer strips and/or assemblies of different colors, please contact factory

Description	No. of poles	Item No.	Pack.-unit pcs	No. of poles	Item No.	Pack.-unit pcs
 <b>Terminal strips with fixing flanges,</b> for screw fixing or similar methods, fixing hole diameter 3.2 mm (with mounting adapter 209-123 also for DIN 35 rail)	<b>2-conductor terminal strips with fixing flanges, grey</b>			<b>4-conductor terminal strips with fixing flanges, grey</b>		
	2	260-102	100	2	260-202	100
	3	260-103	100	3	260-203	100
	4	260-104	100	4	260-204	100
	5	260-105	100	5	260-205	100
	6	260-106	50	6	260-206	50
	7	260-107	50	7	260-207	50
	8	260-108	50	8	260-208	50
	9	260-109	50	9	260-209	50
	10	260-110	25	10	260-210	25
	11	260-111	25	11	260-211	25
	12 ②	260-112	25	12 ②	260-212	25
 <b>Terminal strips with snap-in mounting feet,</b> for plate thickness 0.6 – 1.2 mm, fixing hole diameter 3.5 mm (fits aluminum rail 210-154 or with mounting adapter 209-120 for DIN 35 rail)	<b>2-conductor terminal strips with snap-in mounting feet, grey</b>			<b>4-conductor terminal strips with snap-in mounting feet, grey</b>		
	2	260-152	100	2	260-252	100
	3	260-153	100	3	260-253	100
	4	260-154	100	4	260-254	100
	5	260-155	100	5	260-255	100
	6	260-156	50	6	260-256	50
	7	260-157	50	7	260-257	50
	8	260-158	50	8	260-258	50
	9	260-159	50	9	260-259	50
	10	260-160	25	10	260-260	25
	11	260-161	25	11	260-261	25
	12 ②	260-162	25	12 ②	260-262	25

## Dimensions for modular terminal blocks and terminal strips (in mm)

Modular terminal blocks and terminal strips with fixing flanges

L = No. of poles x pole width  
 L<sub>1</sub> = L + 8.1 mm  
 L<sub>2</sub> = L + 14.5 mm



Modular terminal blocks and terminal strips with snap-in mounting feet

③ End terminal block; see page 10.18

L = (No. of poles x pole width) + 4.4 mm

