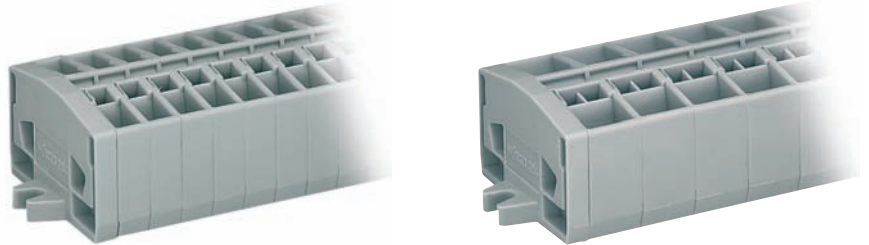
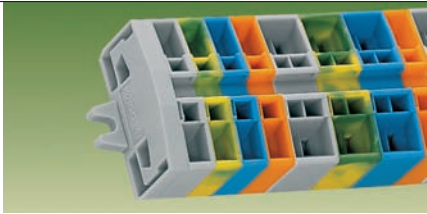



# Terminal Strips with Fixing Flanges or Snap-in Mounting Feet 2.5 mm<sup>2</sup>/AWG 12, Series 264

<p><b>0.08 – 2.5 mm<sup>2</sup></b> 800 V/8 kV/3 ① 24 A</p> <p><b>Pole width 6 mm / 0.236 in</b> 8 – 9 mm / 0.33 in</p> <p>* </p>	<p><b>AWG 28 – 12</b> 600 V, 20 A </p>	<p><b>2 x 0.08 – 2.5 mm<sup>2</sup></b>   <b>2 x AWG 28 – 12</b> 800 V/8 kV/3 ①   600 V, 20 A </p> <p><b>24 A</b></p> <p><b>Pole width 10 mm / 0.394 in</b> 8 – 9 mm / 0.33 in</p> <p>* </p>
---	--	--

- ① 800 V = rated voltage  
8 kV = rated surge voltage  
3 = pollution degree  
(see also section 15)
- ② For longer strips and/or assemblies of different colors, contact factory.
- ③ Suitable for Ex i applications with blue insulating housings
- ⊕ Suitable for Ex e II applications  
0.5 – 2.5 mm<sup>2</sup> AWG 20 – 12  
750 V, 23 A  
(see also section 13)



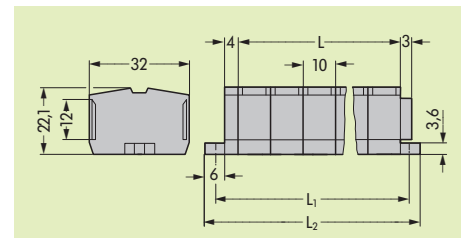
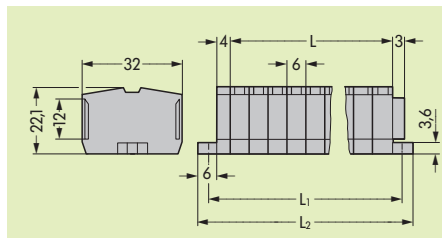
Description	No. of poles	Item No.	Item No.	Pack.-unit pcs	No. of poles	Item No.	Item No.	Pack.-unit pcs
 <p><b>Terminal strips with fixing flanges,</b> for screw fixing or similar methods, fixing hole diameter 3.2 mm</p>	<b>2-conductor terminal strips with fixing flanges,</b>				<b>4-conductor terminal strips with fixing flanges,</b>			
		● grey	○ light grey	⊕		● grey	○ light grey	⊕
	2	264-102	264-132	100	2	264-202	264-232	100
	3	264-103	264-133	100	3	264-203	264-233	100
	4	264-104	264-134	100	4	264-204	264-234	100
	5	264-105	264-135	100	5	264-205	264-235	100
	6	264-106	264-136	100	6	264-206	264-236	100
	7	264-107	264-137	100	7	264-207	264-237	100
	8	264-108	264-138	100	8	264-208	264-238	100
	9	264-109	264-139	50	9	264-209	264-239	50
	10	264-110	264-140	50	10	264-210	264-240	50
	11	264-111	264-141	25	11	264-211	264-241	25
12 ②	264-112	264-142	25	12 ②	264-212	264-242	25	
 <p><b>Terminal strips with snap-in mounting feet,</b> for plate thickness 0.6 – 1.2 mm, fixing hole diameter 3.5 mm</p>	<b>2-conductor terminal strips with snap-in mounting feet,</b>				<b>4-conductor terminal strips with snap-in mounting feet,</b>			
		● grey	○ light grey	⊕		● grey	○ light grey	⊕
	2	264-152	264-182	100	2	264-252	264-282	100
	3	264-153	264-183	100	3	264-253	264-283	100
	4	264-154	264-184	100	4	264-254	264-284	100
	5	264-155	264-185	100	5	264-255	264-285	100
	6	264-156	264-186	100	6	264-256	264-286	100
	7	264-157	264-187	100	7	264-257	264-287	100
	8	264-158	264-188	100	8	264-258	264-288	50
	9	264-159	264-189	50	9	264-259	264-289	50
	10	264-160	264-190	50	10	264-260	264-290	50
	11	264-161	264-191	25	11	264-261	264-291	25
12 ②	264-162	264-192	25	12 ②	264-262	264-292	25	

## Dimensions for modular terminal blocks and terminal strips (in mm)

Modular terminal blocks and terminal strips with fixing flanges

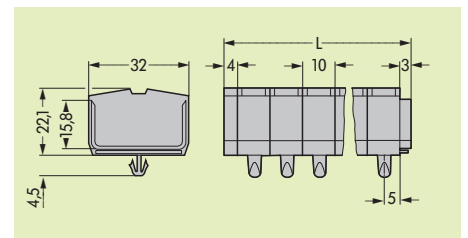
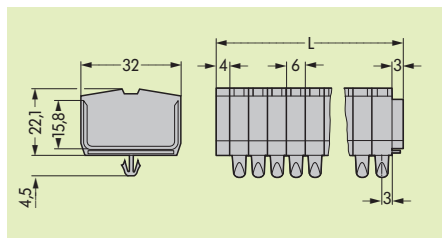
L = No. of poles x pole width  
L<sub>1</sub> = L + 9.6 mm  
L<sub>2</sub> = L + 16 mm

Additional item nos. for colored terminal strips  
blue .../000-006 ③



Modular terminal blocks and terminal strips with snap-in mounting feet

L = (No. of poles x pole width) + 7 mm



\* For further approvals with corresponding ratings see section 15.