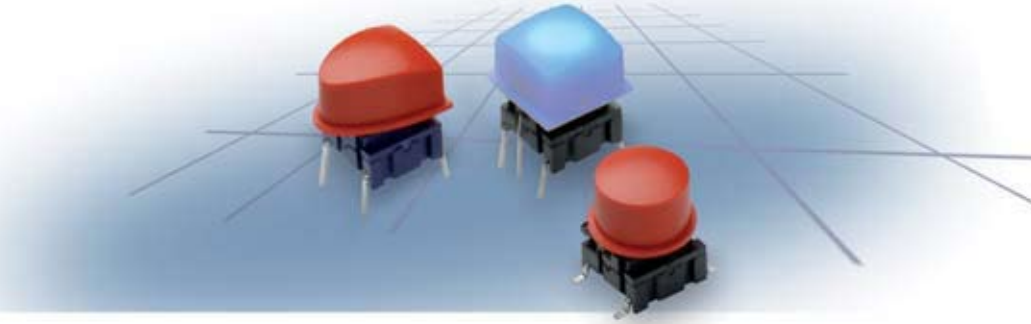


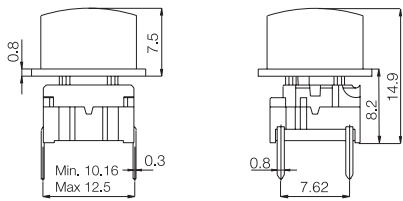
### Technical Data

- through-hole or SMD
- 50mA/24VDC
- single pole/momentary
- 10.000.000 operations life time
- IP67 sealing
- temperature range:
  - low temp: -40/+115°C
  - high temp: -40/+160°C

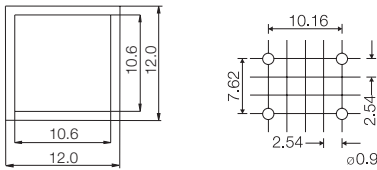


Keycaps shown on this page can also be used on **illumec™ switch 4F**

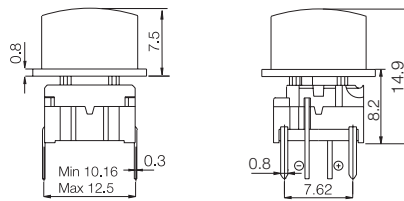
### Dimensions (through-hole) 3F



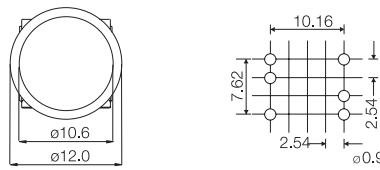
### PCB layout



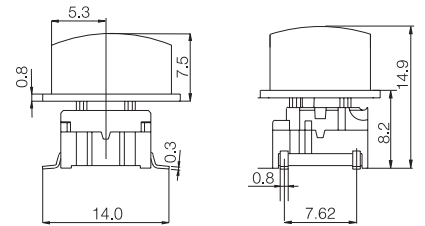
### Dimensions (w/LED) 3F



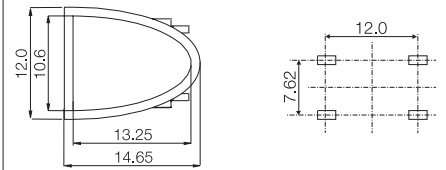
### PCB layout (top view)



### Dimensions (SMD) 3F



### PCB layout



### How to order

**3 F**

Switch



Mounting

T through-hole  
S surface mount



L 6 low temp.

H 9 high temp.

+



Cap



1T



1U



1V



00 blue

03 grey

08 red

09 black

**3 F**

Switch



Mounting

T through-hole



L 6 low temp.

H 9 high temp.



LED

24 green

45 yellow

89 red

+



Cap



1T



1U



1V

**1 6**

frosted white

Ordering example: 3FTL645 + 1V16

For updates of products and/or changes of specifications please see [www.mec.dk](http://www.mec.dk)