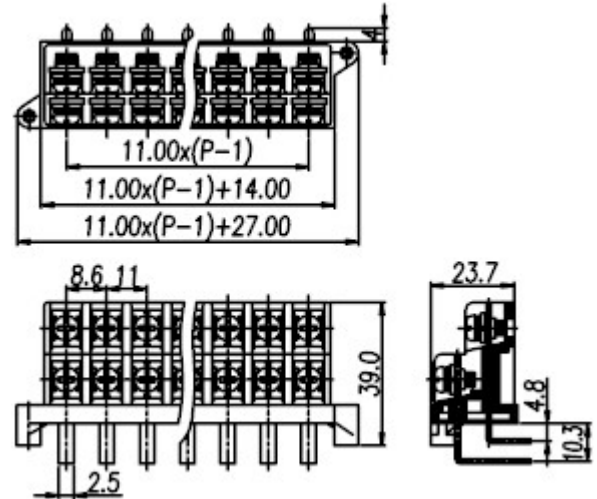


**Barrier Style Terminal Blocks / EM-2**



**EM-23XX**



**Pitch: 11.00mm**

ORDER GUIDE

**EM - 2**

Pole size: 02×2 ~ 06×2P

1 : Bend up (right angle)

2 : Flat

3 : Bend down (left angle)

Approval

**Materials**

Rated voltage	24V
Rated current	30A
Plastic Housing	PBT, UL94V-0, Black
Terminal	Brass, 1.2t, Gold plated
Screw	Steel, M4, Gold plated



### Specifications

Working Temperature	-40°C ~ +130°C
Insulation withstand Voltage	AC1500V at 1 minute
Insulation Resistance	1000MΩ or more at DC500V
Wire range	22 ~ 12 AWG
Rated Torque Value	18Kg - cm

TEL: +886-2-2908-0614

FAX: +886-2-2908-8549

E-mail: [infor@dinkle.com.tw](mailto:infor@dinkle.com.tw)