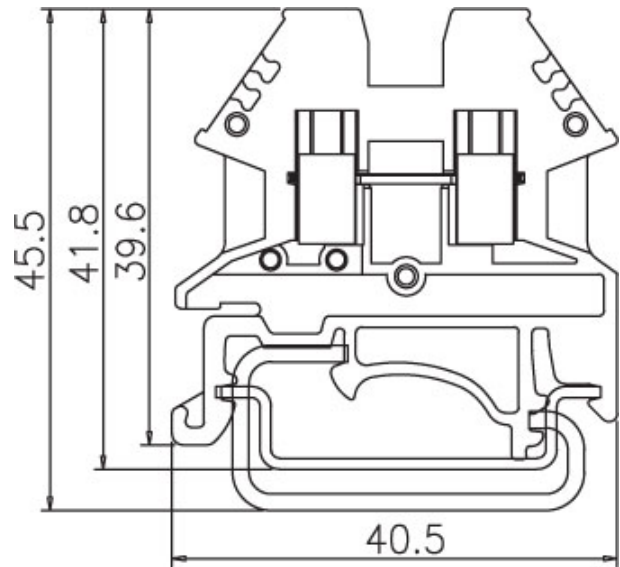
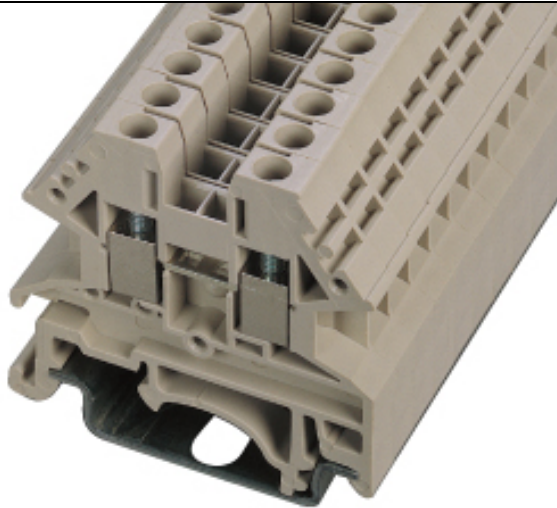


**DIN Rail terminal blocks / DK..D series**



**DK2.5D**







**TxHxW 5.1x39.6x40.5**

|  |                  |         |
|--|------------------|---------|
| Approval                               |                  |         |
| Technical Data                         | UL               | IEC     |
| Rated voltage                          | 600V             | 1000V   |
| Rated current                          | 20A              | 24A     |
| Wire range                             |                  |         |
| Solid wire (AWG   mm <sup>2</sup> )    | 22~12            | 0.5~2.5 |
| Stranded wire (AWG   mm <sup>2</sup> ) | 22~12            | 0.5~2.5 |
| Rated surge voltage (UL/IEC/Max.)      | 2.2 / 3.5 / 6 KV |         |
| Torque (Lb-in)                         | 4.4              |         |
| Screw                                  | M3               |         |
| Wire strip length                      | 9~11mm           |         |
|  |                  |         |
|  |                  |         |
|  |                  |         |
|  |                  |         |
|  |                  |         |
|  |                  |         |
|  |                  |         |
|  |                  |         |



| Accessories                        | Cat. No.       |
|------------------------------------|----------------|
| End cover                          | DK4NC          |
| Partition                          |                |
| Small partition                    | DKNSPS-001     |
| Cross jumper - central type        | DSS2.5N        |
| Cross jumper - cage inserting type | CSC-2.5XXN     |
| Suitable plugs                     |                |
| Marking label                      | TM26           |
| Suitable rail                      | TS-35<br>TS-32 |
| Tool                               | SDM2.5         |

| Optional color  | Cat. No.  |
|---|-----------|
|  | DK2.5D-RD |
|  | DK2.5D-BL |
|  | DK2.5D-BK |
|  | DK2.5D-OR |