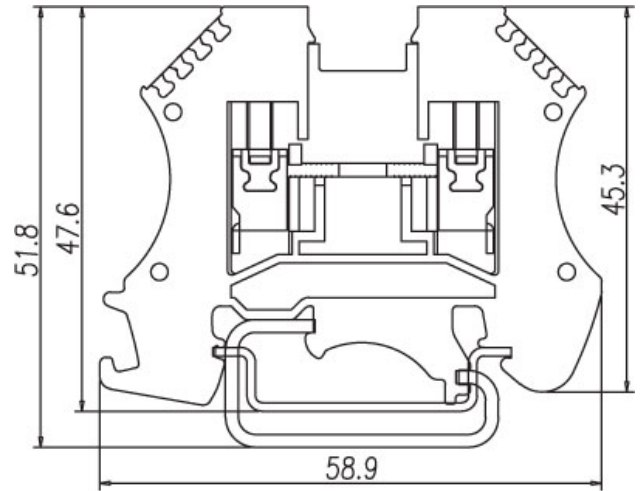
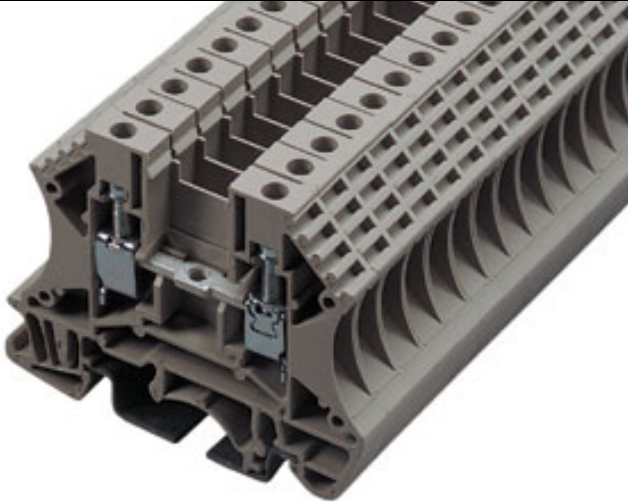





DIN Rail terminal blocks / DK series







DK4



TxHxW 6.1x47.6x58.9

Approval	  	
Technical Data	UL	IEC
Rated voltage	600V	630V
Rated current	35A	32A
Wire range		
Solid wire (AWG mm ²)	22~10	0.5~4
Stranded wire (AWG mm ²)	22~10	0.5~4
Rated surge voltage (UL/IEC/Max.)	2.2 / 2.5 / 8 KV	
Torque (Lb-in)	7	
Screw	M3	
Wire strip length	10~12mm	



Accessories	Cat. No.	
End cover	DK2.5C	
Partition	DKSPS-002	
Small partition	DKSPS-001	
Cross jumper - central type	DS4	02P
		03P
		10P
Cross jumper - cage inserting type	CSC-4	02P
		03P
		10P
Suitable plugs		
Marking label	TM27	
Suitable rail	TS-35	
	TS-32	
Tool	SDM3.0	
Optional color	Cat. No.	
	DK4-RD	
	DK4-BL	
	DK4-BK	
	DK4-OR	