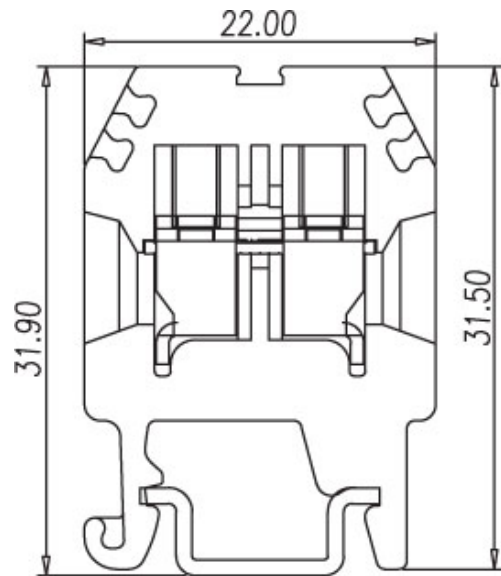
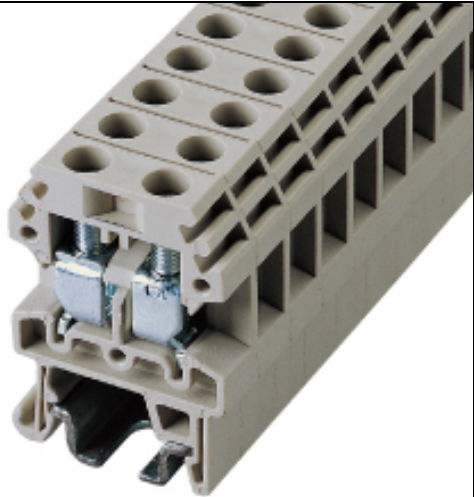




DIN Rail terminal blocks / DK..S series



DK4S







TxHxW 6.1x31.50x22

Approval	 	
Technical Data	UL	IEC
Rated voltage	300V	500V
Rated current	30A	32A
Wire range		
Solid wire (AWG mm ²)	22~10	0.5~4
Stranded wire (AWG mm ²)	22~10	0.5~4
Rated surge voltage (UL/IEC/Max.)	1.6 / 3 / 5 KV	
Torque (Lb-in)	5.2	
Screw	M3	
Wire strip length	7~9mm	



Accessories	Cat. No.
End cover	DK4PC
Partition	
Small partition	
Cross jumper - central type	
Cross jumper - cage inserting type	CSC-4XXS
Suitable plugs	
Marking label	TM21
Suitable rail	TS-15
Tool	SDM3.5

Optional color	Cat. No.
	DK4S-RD
	DK4S-BL
	DK4S-BK
	DK4S-OR