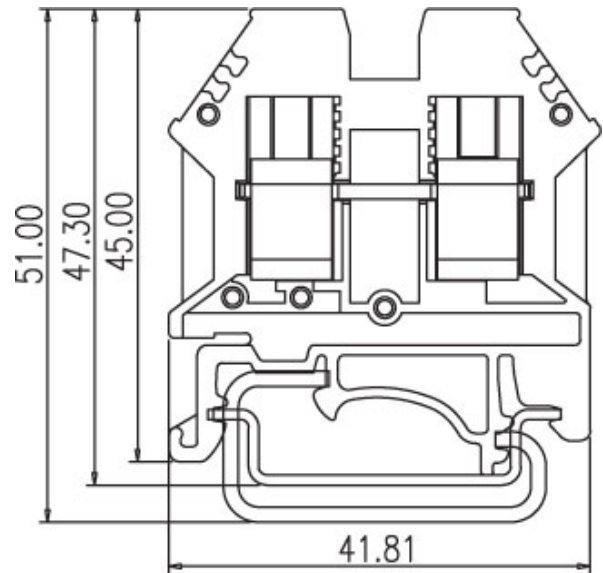
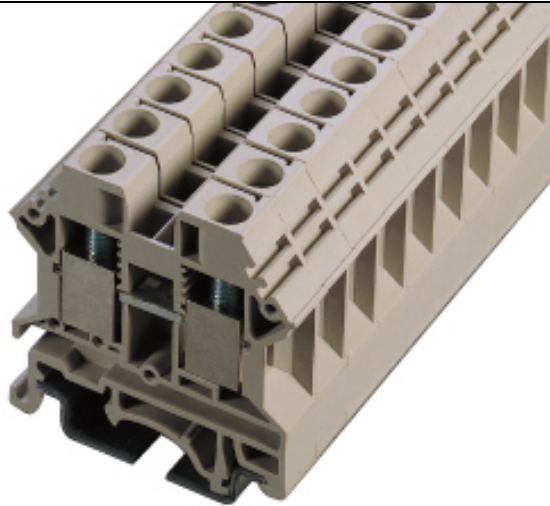


DIN Rail terminal blocks / DK..D series



DK6D







TxHxW 8x45x41.81

Approval		
Technical Data	UL	IEC
Rated voltage	600V	1000V
Rated current	50A	41A
Wire range		
Solid wire (AWG mm ²)	20~8	0.5~6
Stranded wire (AWG mm ²)	20~8	0.5~6
Rated surge voltage (UL/IEC/Max.)	2.2 / 3.5 / 8 KV	
Torque (Lb-in)	10.4	
Screw	M4	
Wire strip length	12~14mm	



Accessories	Cat. No.
End cover	DK6NC
Partition	
Small partition	DKNSPS-002
Cross jumper - central type	DSS6N
Cross jumper - cage inserting type	CSC-6XXN
Suitable plugs	
Marking label	TM28
Suitable rail	TS-35 TS-32
Tool	SDM3.5

Optional color	Cat. No.
	DK6D-RD
	DK6D-BL
	DK6D-BK
	DK6D-OR