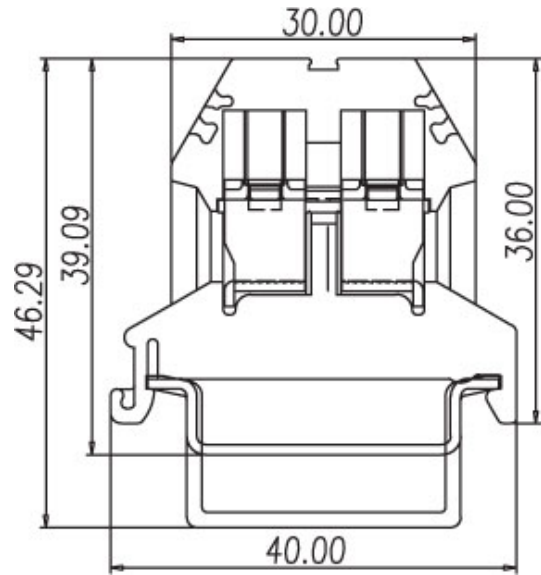
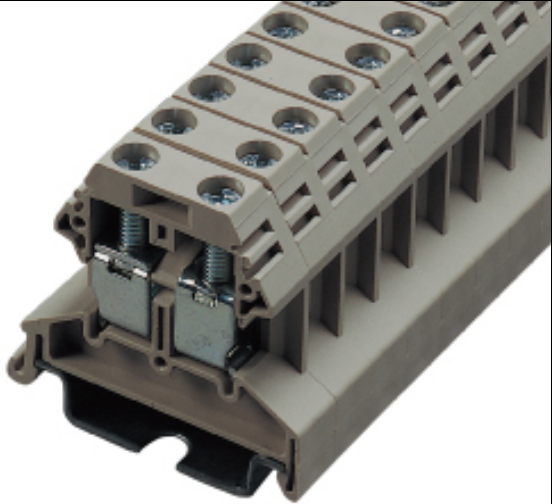




DIN Rail terminal blocks / DK..P series



DK6P







TxHxW 8.0x36x40

Approval	 	
Technical Data	UL	IEC
Rated voltage	300V	500V
Rated current	50A	41A
Wire range		
Solid wire (AWG mm ²)	22~8	0.5~6
Stranded wire (AWG mm ²)	22~8	0.5~6
Rated surge voltage (UL/IEC/Max.)	1.6 / 3 / 5 KV	
Torque (Lb-in)	10.4	
Screw	M4	
Wire strip length	9~11mm	



Accessories	Cat. No.
End cover	DK6PC
Partition	
Small partition	
Cross jumper - central type	
Cross jumper - cage inserting type	CSC-6XXS
Suitable plugs	
Marking label	TM22
Suitable rail	TS-35
Tool	SDM4.0

Optional color	Cat. No.
	DK6P-RD
	DK6P-BL
	DK6P -BK
	DK6P-OR