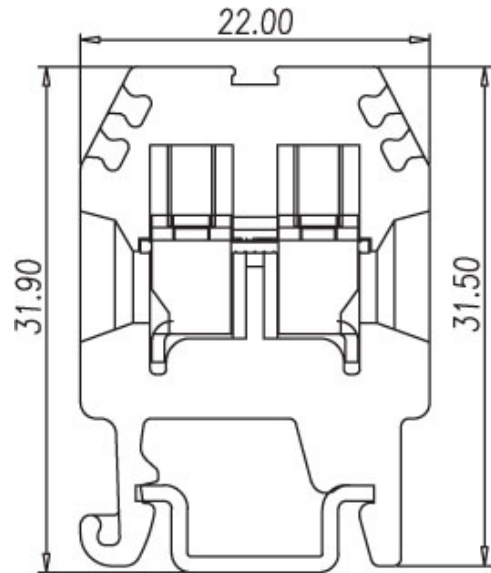
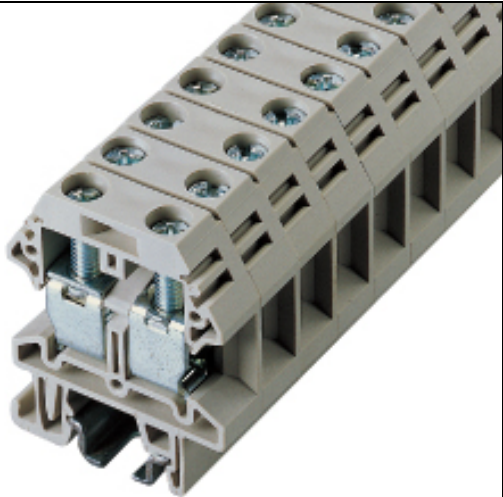




**DIN Rail terminal blocks / DK..S series**



**DK6S**







**TxHxW 8.0x37.4x30**

Approval	 	
Technical Data	UL	IEC
Rated voltage	300V	500V
Rated current	50A	41A
Wire range		
Solid wire (AWG   mm <sup>2</sup> )	20~8	0.5~6
Stranded wire (AWG   mm <sup>2</sup> )	20~8	0.5~6
Rated surge voltage (UL/IEC/Max.)	1.6 / 3 / 6 KV	
Torque (Lb-in)	10.4	
Screw	M4	
Wire strip length	9~11mm	



Accessories	Cat. No.
End cover	DK6PC
Partition	
Small partition	
Cross jumper - central type	
Cross jumper - cage inserting type	CSC-6XXS
Suitable plugs	
Marking label	TM22
Suitable rail	TS-15
Tool	SDM4.0

Optional color	Cat. No.
	DK6S-RD
	DK6S-BL
	DK6S-BK
	DK6S-OR