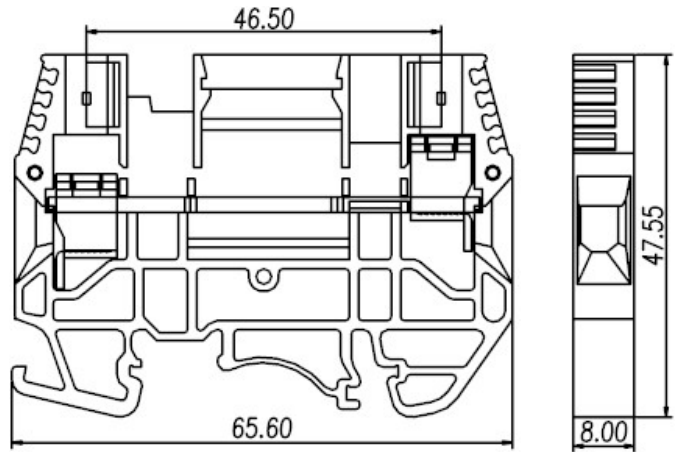
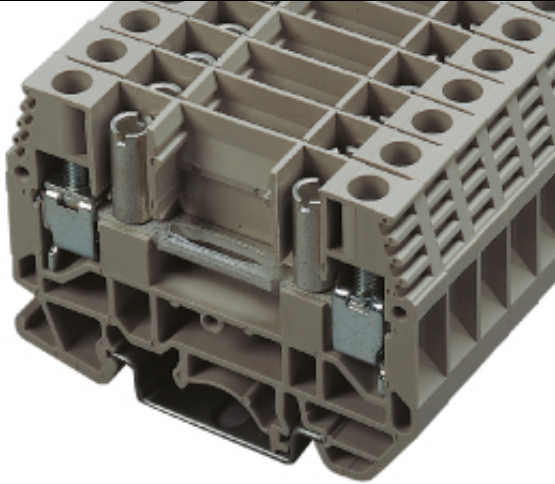


DIN Rail terminal blocks / DKT series



DKTL6



TxHxW 8x65.6x47.55

Approval	UL	
Technical Data	UL	IEC
Rated voltage	300V / 600V	660V
Rated current	48A / 5A	41A
Wire range		
Solid wire (AWG mm ²)	20~8	0.5~6
Stranded wire (AWG mm ²)	20~8	0.5~6
Rated surge voltage (UL/IEC/Max.)	2.2 / 2.5 / 6 KV	
Torque (Lb-in)	18	
Screw	M4	
Wire strip length	8mm	

Accessories	Cat. No.	
End cover	DKTLC	
Partition	DKSPS-006	
Small partition	DKTLP	
Cross jumper - central type	DS6	02P
		03P
		10P
Cross jumper - cage inserting type	CSC-6	02P
		03P
		10P
Jumper slides	DS6A01	
	DS6A02	
Screw	DS6S1	
	DS6S2	
	DS6S3	
Nut	CT01	
Marking label	TM28	
Suitable rail	TS-35T	
	S-32	
Tool	SDM4.0	

