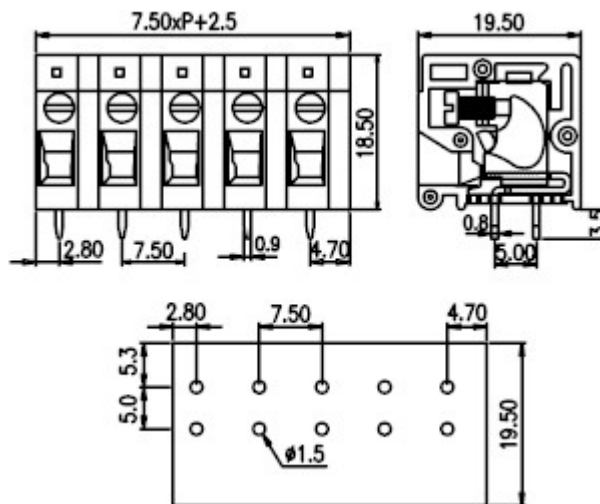
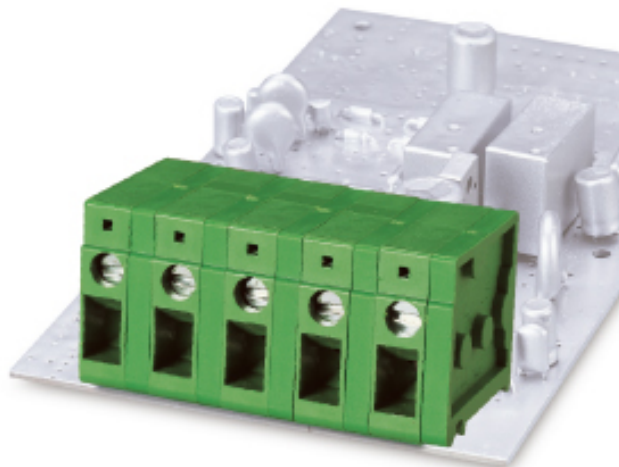




Front entry type terminal blocks / DT-123 series



DT-123RA-..P3



Pitch: 7.50mm

Approval	 	
Technical Data	UL	IEC
Rated voltage	300V	750V
Rated current	20A	24A
Wire range		2.5mm ²
Solid wire (AWG)	22~12	
Stranded wire (AWG/mm ²)	22~12	
Rated surge voltage (UL/IEC/Max.)	1.6 / 2.5 / 4 KV	
Torque (Lb-in)	4.5	
Screw	M2.5	
Wire strip length	13~15mm	
Pole	Cat. No.	
02	DT-123RA-02P3	
:	:	
:	:	
24	DT-123RA-24P3	