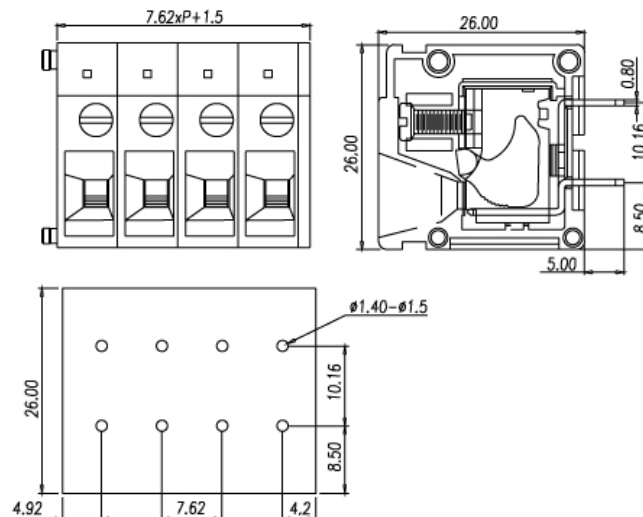
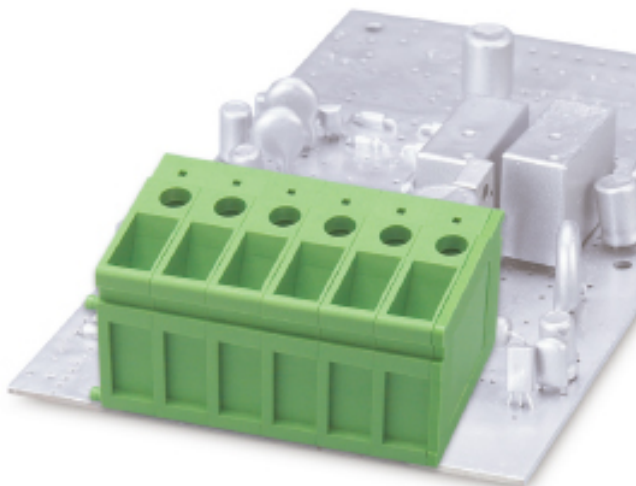


DT-2321



Pitch: 7.62mm

Approval		
Technical Data	UL	IEC
Rated voltage	300V	450V
Rated current	33A	24A
Wire range	2.5mm ²	
Solid wire (AWG)	22~10	
Stranded wire (AWG/mm ²)	22~10	
Rated surge voltage (UL/IEC/Max.)	1.6 / 2.5 / 4 KV	
Torque (Lb-in)	4.5	
Screw	M3	
Wire strip length	10~11mm	
Pole	Cat. No.	
02	DT-2321-02P	
:	:	
:	:	
16	DT-2321-16P	