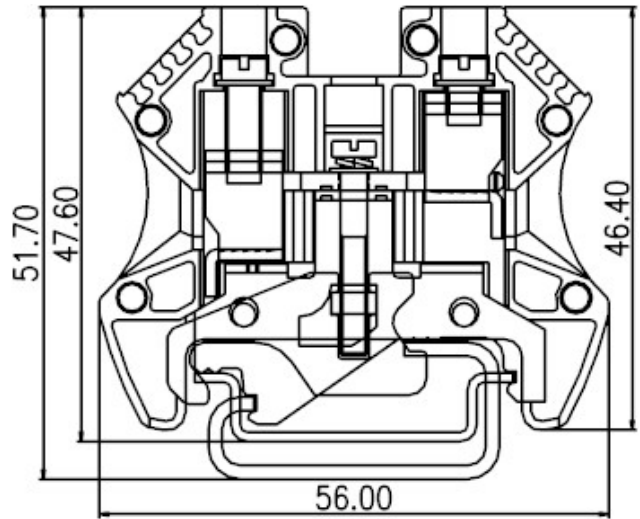
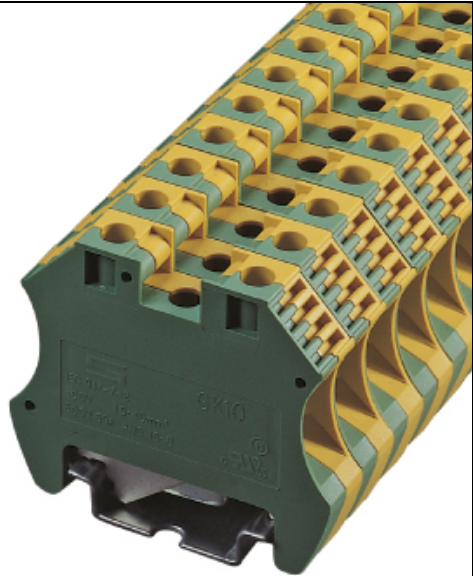





DIN Rail terminal blocks / GK series



GK10



TxHxW 10.4x46.4x56

Approval	  	
Technical Data	UL	IEC
Rated voltage		500V
Rated current	50A	57A
Wire range		
Solid wire (AWG/mm ²)	16~8	1.5~10
Stranded wire (AWG/mm ²)	16~8	1.5~10
Rated surge voltage (UL/IEC/Max.)	2.2 / 2.5 / 8 KV	
Torque (Lb-in)	15.6	
Screw	M4	
Wire strip length	12~16mm	
Accessories	Cat. No.	
Marking label	TM11 , TM28	

TEL: +886-2-2908-0614

FAX: +886-2-2908-8549

E-mail: infor@dinkle.com.tw