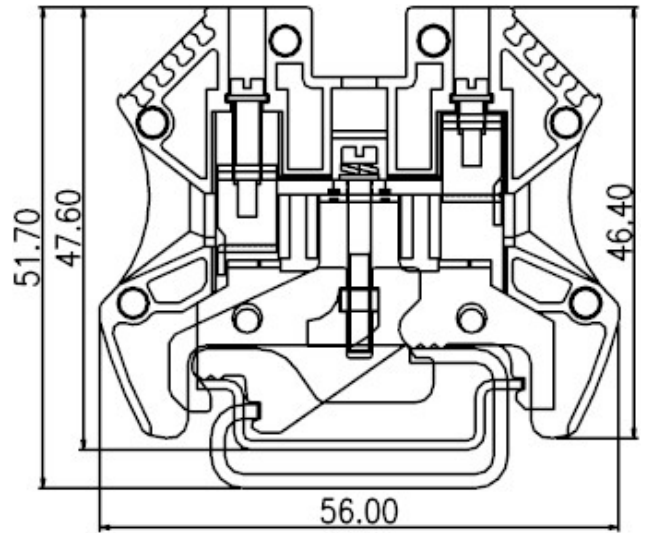
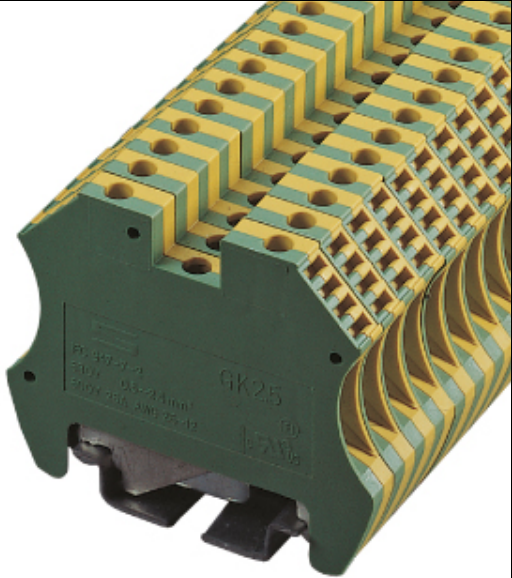





DIN Rail terminal blocks / GK series



GK2.5



TxHxW 5.7x46.4x56

Approval	  	
Technical Data	UL	IEC
Rated voltage		630V
Rated current	25A	24A
Wire range		
Solid wire (AWG/mm ²)	26~12	0.5~2.5
Stranded wire (AWG/mm ²)	26~12	0.5~2.5
Rated surge voltage (UL/IEC/Max.)	2.2 / 2.5 / 8 KV	
Torque (Lb-in)	6.9	
Screw	M3	
Wire strip length	10~14mm	
Accessories	Cat. No.	
Marking label	TM08 , TM26	

TEL: +886-2-2908-0614

FAX: +886-2-2908-8549

E-mail: infor@dinkle.com.tw