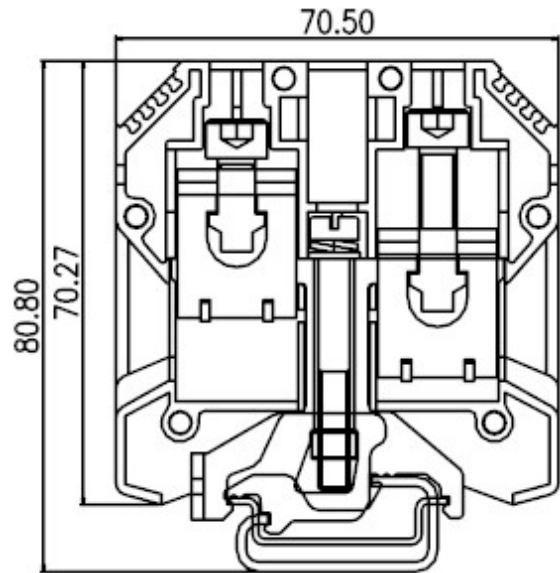
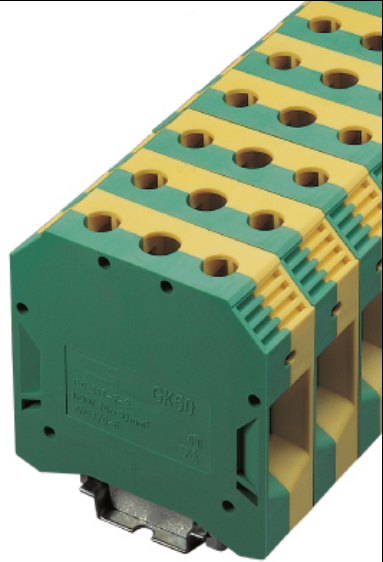





DIN Rail terminal blocks / GK series



GK50



TxHxW 20x70.27x70.5

Approval	  	
Technical Data	UL	IEC
Rated voltage		1000V
Rated current		150A
Wire range		
Solid wire (AWG/mm ²)	6~1 / 0	16~50
Stranded wire (AWG/mm ²)	6~1 / 0	16~50
Rated surge voltage (UL/IEC/Max.)	/ / 8 KV	
Torque (Lb-in)	70	
Screw	M6	
Wire strip length	20~25mm	

(be used on a copper-DIN Rail)

TEL: +886-2-2908-0614

FAX: +886-2-2908-8549

E-mail: infor@dinkle.com.tw