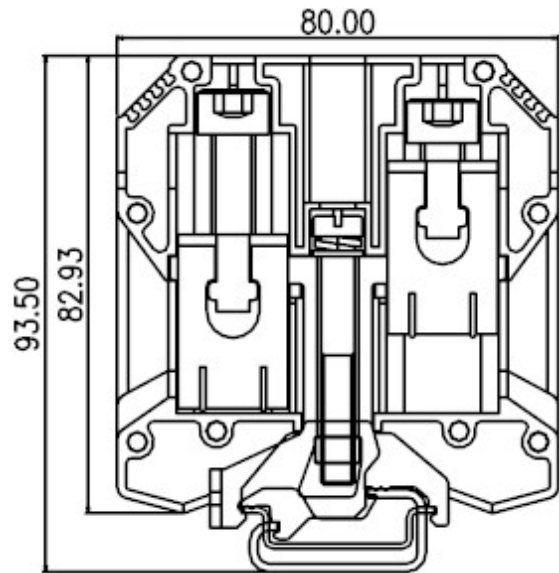
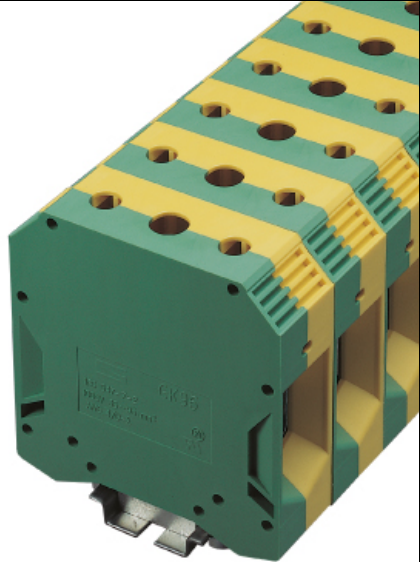





DIN Rail terminal blocks / GK series



GK95



TxHxW 25x82.93x80

Approval	  	
Technical Data	UL	IEC
Rated voltage	600V	1000V
Rated current		232A
Wire range		
Solid wire (AWG/mm ²)	2	35~95
Stranded wire (AWG/mm ²)	2~4 / 0	35~95
Rated surge voltage (UL/IEC/Max.)	/ / 8 KV	
Torque (Lb-in)	158	
Screw	M8	
Wire strip length	20~25mm	

(be used on a copper-DIN Rail)

TEL: +886-2-2908-0614

FAX: +886-2-2908-8549

E-mail: infor@dinkle.com.tw